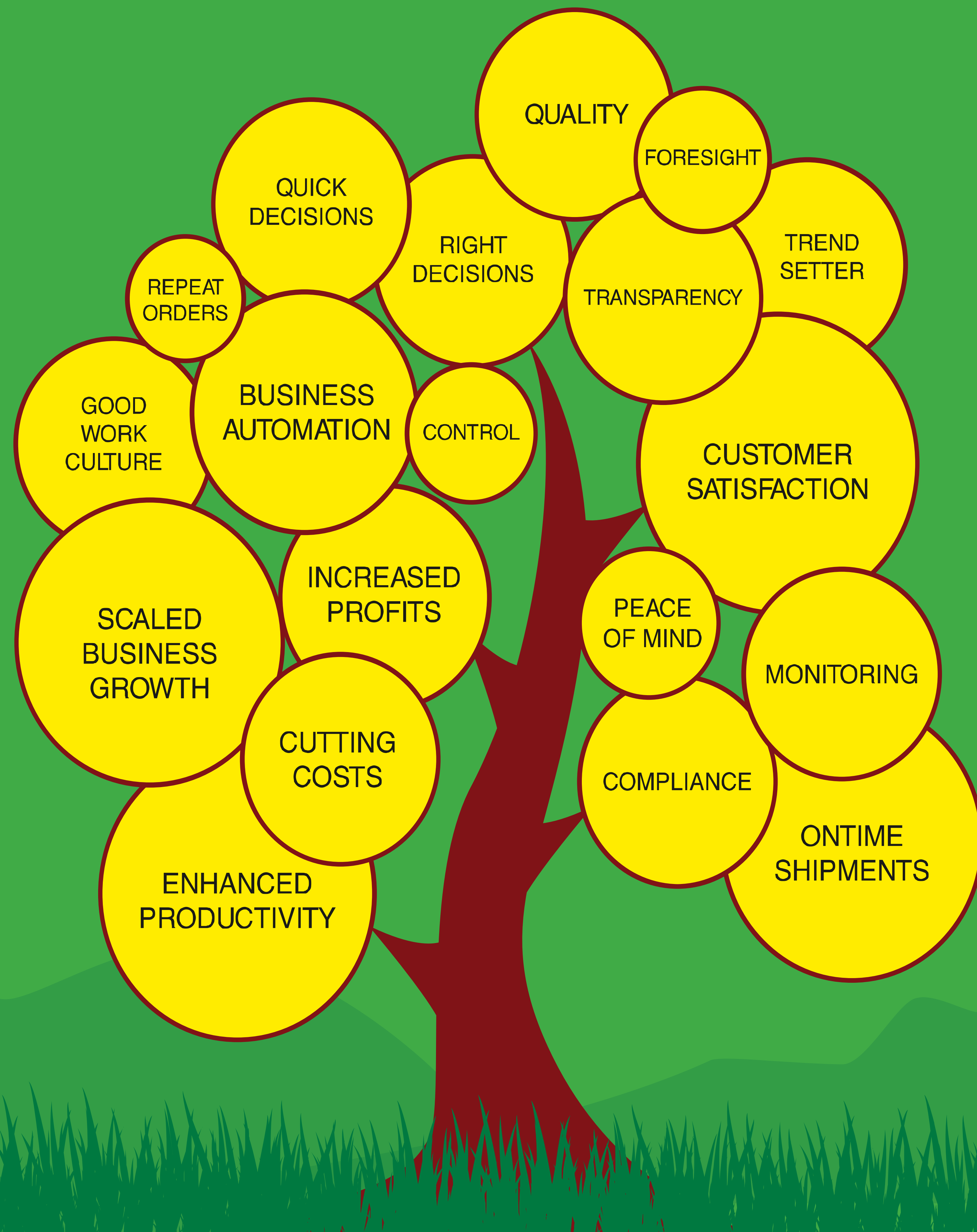
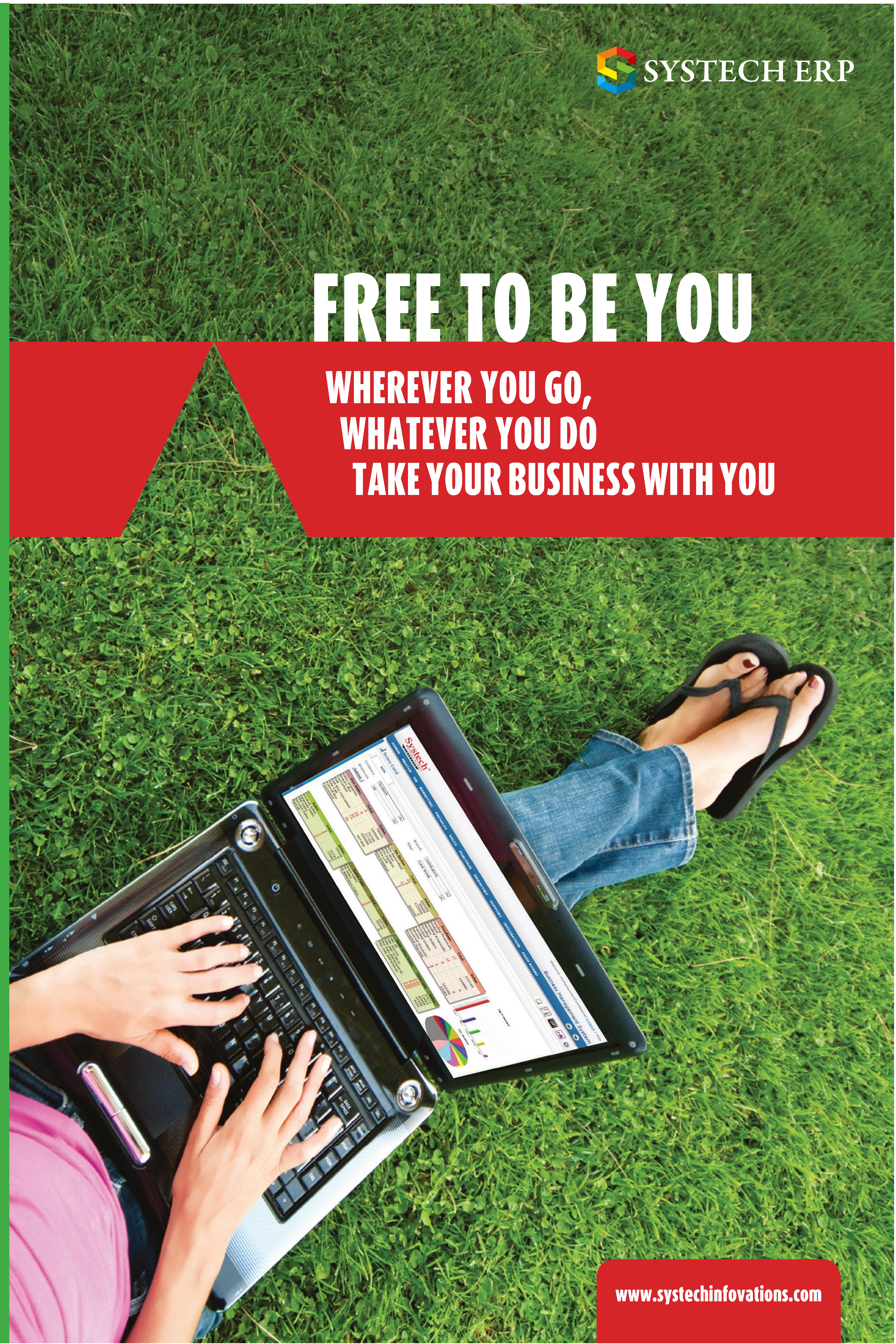


SYSTECH ERP ADVANTAGE



FREE TO BE YOU

**WHEREVER YOU GO,
WHATEVER YOU DO
TAKE YOUR BUSINESS WITH YOU**



SYSTECH INFOVATIONS PVT LTD

188/1, Varadharaja Layout - 1, PN Palayam Road, KR Puram,
Ganapathy, Coimbatore - 641 006 Tamilnadu INDIA Tel : +91 422 4399222

MOBILE : +91 99449 31313 **SKYPE ID :** tradewinds_systech
E-MAIL : info@systechinfovations.com **WEB :** www.systechinfovations.com

Systech ERP is a trademark of Systech Infovations Pvt . Ltd

WE PUT YOU IN THE PICTURE.

We have developed technologies that put enormous resources in the hands of enterprises like yours to keep your bottom line looking up. And complete control stays where it should. In your hands. Multi-locations such as Head Office, Branches, Factories & Warehouses, Distributed Sales outlets, Multi-point service centres are few such scenarios. Key decisions and approvals can be made while you are at home, on the move or even during your leisure. So what you get is real-time information system to face today's distributed, complex and challenging business environment.

SYSTECH ERP is a highly integrated multi-functional Software suite tailored to meet the needs of diverse industries across a variety of customer profiles. SYSTECH ERP optimizes your resources, offers you total visibility and control across your business, helping you to make quick and correct decisions in real-time.

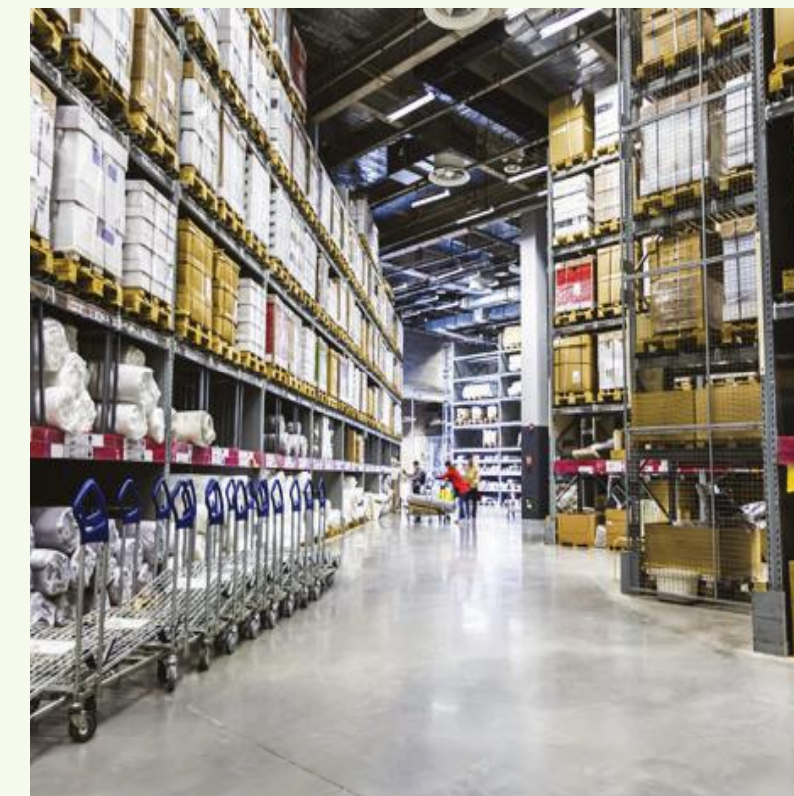
SYSTECH ERP offers cutting edge capabilities that include mobility, dashboards, digital office, analytics, interoperability, device integration, workflow configuration, user defined reports, platform independence, adaptable deployment along with a host of other features. With innovative multi-tier technology, SYSTECH ERP is robust, flexible, scalable, customizable, easily manageable and affordable too.

Now you can concentrate on your core business leaving everything else to SYSTECH ERP

WE OFFER ERP SOLUTIONS ACROSS VARIED INDUSTRIES



Manufacturing



Trading & Distribution



Retail Chain



Home Textile



Spinning



Apparel



Printing



Jewellery

CORE MODULES :

- ▶ Pre-Sales ▶ Sales ▶ Purchase ▶ Inventory ▶ Production Planning & Control
- ▶ Material Requirement Planning ▶ Finance (Tally Integration).

OPTIONAL MODULES :

- ▶ Finance ▶ HRMS ▶ Assets ▶ Fleet ▶ Maintenance ▶ Support ▶ CRM ▶ POS

SALIENT FEATURES



Anywhere Anydevice ERP

Stay Connected with your business from anywhere anytime and thru' any device (Laptop, Tab or mobile) thru' a simple data connection. Do and watch transactions on the go, all at an incredible speed.



Mobile Apps

Get those exclusive functions optimized in the form of Mobile Apps that synchronizes with your ERP data in a seamless manner.



Analytics & Dashboards

Analysis and presentation of data as rich, vibrant, interactive and lively graphical dashboards that helps you interpret your business to take quick and easy decisions.



Paperless Office

Store images of your style/products, vendor invoices, key shipment documents, employee images and documents for instant reference and audits. These documents will traverse thru' the entire work-flow making your computing easy and exciting.



SMS/eMail alerts

Send critical information and alerts over SMS and email to any stake-holder of the business and making them to participate. Helps you act pro-actively before things become too late.



Tally Integration

Live integration with Tally ERP9 for posting your purchases & payments, sales & receipts, job order invoices, debit & credit notes and closing stocks. Replaces manual replication with accurate and timely data making your P& L and Balance Sheet upto date.



IoT

Being the buzzword of IT industry today, IoT (Internet of Things) integrates with your business environment seamlessly to form the ultimate automation. Data fetching from your machines, capturing fabric weight from scales, attendance data from your bio-metric machines are classical examples. It ensures accuracy and optimizes time and resources.