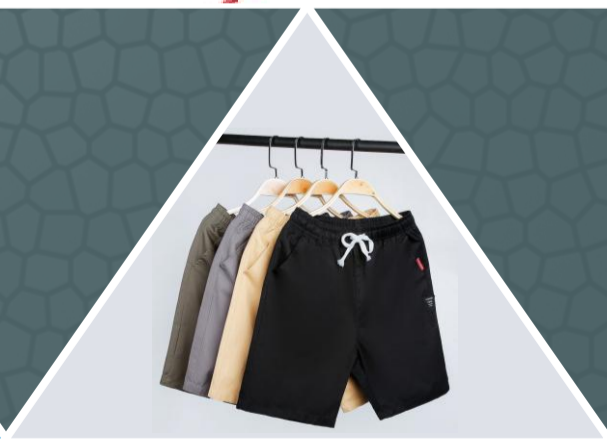


End to End Management of your  
Home Textile/Made-Up/  
Fabric/Apparel Manufacturing  
Now at your finger tips.



**Systech ERP - TEXTILE MANAGEMENT SYSTEM**

*The New age ERP for the discerning Customer ...*



## Systech ERP - TEXTILE MANAGEMENT SYSTEM

Systech TMS is an ERP exclusively developed to meet the demanding needs of the Textile Business from its rich legacy parent product that is proven in several other industries. Systech TMS optimizes your resources, offers you total visibility and control across your business thereby helping you to make quick and corrective decisions in real-time.

Systech TMS integrates everything right from Buyer Enquiry to Production Planning and Purchase to Inventory and Sales to Finance till you receive your last penny incentive, all in a holistic manner. Systech ERP offers cutting edge technology that transforms the way you do your business into a pleasurable everyday journey.

So from now on, you can focus on your core business leaving everything else to Systech TMS.

### Other Features

- ✓ Multi-tier application on Java platform
- ✓ OS independent (Windows, Linux, Mac)
- ✓ Flexible deployment (Cloud, On-premises, Intranet)
- ✓ Highly Secured with encryption & user privileges
- ✓ Easy administration
- ✓ Data Migration from current application
- ✓ Zero indirect cost with high RoI
- ✓ Quickly Customizable



#### Anywhere Anydevice ERP

Stay Connected with your business from anywhere anytime and thru' any device (Laptop, Tab or mobile) thru' a simple data connection. Do and watch transactions on the go, all at an incredible speed.



#### Mobile Apps

Get those exclusive functions optimized in the form of Mobile Apps that synchronizes with your ERP data in a seamless manner.



#### Analytics & Dashboards

Analysis and presentation of data as rich, vibrant, interactive and lively graphical dashboards that helps you interpret your business to take quick and easy decisions.



#### Paperless Office

Store images of your style/products, vendor invoices, key shipment documents, employee images and documents for instant reference and audits. These documents will traverse thru' the entire work-flow making your computing easy and exciting.



#### SMS/eMail alerts

Send critical information and alerts over SMS and email to any stakeholder of the business and making them to participate. Helps you act pro-actively before things become too late.



**IoT** : Being the buzzword of IT industry today, IoT (Internet of Things) integrates with your business environment seamlessly to form the ultimate automation. Data fetching from your machines, capturing fabric weight from scales, attendance data from your bio-metric machines are classical examples. It ensures accuracy and optimizes time and resources.



#### Tally Integration

Live integration with Tally.ERP9 for posting your purchases & payments, sales & receipts, job order invoices, debit & credit notes and closing stock. Replaces manual replication with accurate and timely data making your P&L and Balance Sheet upto date.



## Pre-Sales

- ▲ Buyer Enquiry ▲ Costing ▲ Quotation ▲ Sampling ▲ Funnel ▲ Lead Management
- ▲ Won and Lost Analysis ▲ MIS Reports

## Sales

- ▲ Buyer Order Acceptance ▲ Quality Specs & Tolerance ▲ Scheduling ▲ Budgeting
- ▲ Proforma Invoice ▲ Packing List ▲ Pre-dispatched Quality Control ▲ Delivery Note
- ▲ Lorry Invoice ▲ Export Sales Process ▲ Incentives and Schemes Tracking ▲ Sales Receipts ▲ MIS Reports

## Production Planning

- ▲ Planning (Time and Action) ▲ Budgeting & Variance ▲ Internal Work order ▲ Cut Size ▲ Style and Fabric Allotment ▲ Yarn & Fabric Requirement Planning and Process allotment ▲ Yarn & Fabric Procurement and Production Planning ▲ Process Alteration Provision ▲ Set Concepts ▲ Raw material Allotments (Yarn and Fabric)
- ▲ Process Rejections & Re-opening ▲ Order wise Inventory Tracking ▲ Wastage Analysis
- ▲ Process-wise material issue / receipt control ▲ Time n Action planning and deviation
- ▲ MIS Reports

## Purchase

- ▲ Purchase Indent (Yarn, Fabric, Packing Materials and Made-ups) ▲ Purchase Order (Yarn, Fabric, Packing Materials and Made-ups) ▲ Gate Entry form ▲ Goods Receipt Note
- ▲ Replacements & Rejections ▲ Quality Control Management ▲ Supplier Bill Forwarding and Acceptance. ▲ Purchase Invoice ▲ Purchase against AL & EPCG
- ▲ Purchase Returns ▲ Debit Note ▲ Vendor Rating and Analysis ▲ Vendor and Item History in Purchase Order ▲ Other Purchases (Assets, Maintenance & General) ▲ MIS Reports

## Inventory

- ▲ Stock item with images ▲ EAN Master with Tracking ▲ Synthetic Items ▲ Vendor Item Mapping ▲ Stock Addition/Deduction ▲ Godown Management ▲ Multiple UOMs ▲ Stock Summary ▲ Roll-wise, length & weight ▲ Stock Transfers ▲ Reorder Level Management ▲ Bin- Rack System ▲ Batch Management ▲ Stock Ageing Analysis
- ▲ Transaction godown Mapping ▲ Multiple Stock Valuation Methods (AVG, FIFO, LIFO, Standard) ▲ Physical stock verification ▲ Process wise Stock ▲ AQL analysis ▲ MIS Reports

## Yarn Dyeing / Weaving / Fabric Processing

- ▲ Job Order ▲ Yarn / Fabric Delivery ▲ First lot inspection ▲ Process receipt
- ▲ 100% inspection ▲ Rejection & Rework ▲ Return of unprocessed ▲ Fabric Size changes and tracking ▲ Jobwork invoice ▲ Debit Notes ▲ Payment & Outstanding ▲ Jobworker pendings ▲ MIS Reports

## Made-Ups Production

- ▲ In house Vs Jobwork ▲ Cutting ▲ Cut Size wise Process inward / outward
- ▲ Made- Up Processes ▲ (Embroidery, Printing & Washing) ▲ Stitching
- ▲ Packing ▲ Inline, Midline & Final Inspection ▲ Testing & Certification
- ▲ Job worker pending report ▲ MIS Reports

## Tally Integration

- ▲ Sales ▲ Purchase ▲ Job invoice
- ▲ Receipts ▲ Payments
- ▲ Closing Stock Values

## Key Capabilities

- ↔ Score cards
- ↔ Configurable Work Flow
- ↔ Bar Code
- ↔ Multi-level approvals
- ↔ Export key reports to Excel / PDF
- ↔ Key reports summary and registers
- ↔ Multiple locations & divisions
- ↔ Designation/Employee based user privileges
- ↔ Multi-currency in sales & purchase
- ↔ Daily Transaction register
- ↔ Freeze books after a date
- ↔ Releases & Versions
- ↔ User defined fields in reports

## Modules

- ▲ Pre-Sales
- ▲ Sales
- ▲ Purchase
- ▲ Inventory
- ▲ Production Planning
- ▲ Finance (Tally Integration)

## Add-Ons

- ▲ HR & Payroll
- ▲ Maintenance
- ▲ Asset Management
- ▲ Fleet Management



# We offer ERP solutions across varied industries



**Manufacturing**



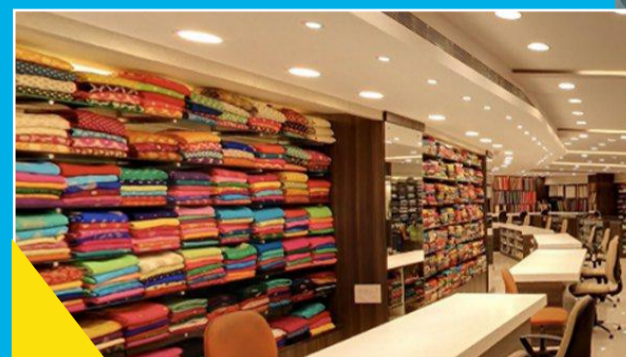
**Spinning**



**Apparels**



**Textile**



**Retail**



**Printing & Publishing**



**Jewellery**



**CRM / HRM**



**SYSTECH**

Systech ERP Corp is a part of Systech that offers innovative IT Products, Services and Solutions that has delighted customers since 1997. Systech offers to digital-transform your business by effective implementation of its ready-fit ERP solutions to the manufacturing, textile, trading and retail segments apart from HRM & CRM. Now you can focus on your growth, counting Systech ERP as your integral partner.

**Call us today :** +91 95854 21313

**Email :** [info@systecherp.com](mailto:info@systecherp.com)

**Web :** [www.systecherp.com](http://www.systecherp.com)